

Bulletin 1

IOF World Ranking Event (WRE), Finnish Long Distance
Orienteering Championships in Siikainen, Finland, 12–13 September 2020

Welcome to the Finnish Long Distance Orienteering Championships in Siikainen with WRE status in the M/W21 classes!

Event organizers: Orienteering clubs Kankaanpään Suunnistajat and Siikaisten Sisu

Event website: <https://kansu.fi/sm2020>

Main officials:

Event director: Hanna Kallio

Course setters: Raimo Hannukainen and Taisto Salo

Information and media: Tuomas Väinä, tuomas.vaina@kankaanpaa.fi,
+358 50 3233 748 (please, no phone calls on school days between 8–15 Finnish time)

Results service: Jussi Hannukainen

English-speaking contact persons: Hanna Kallio, +358 40 7776428, kallionhanna@gmail.com and Tuomas Väinä, tuomas.vaina@kankaanpaa.fi, +358 50 3233 748 (please, no phone calls on school days between 8–15 Finnish time)

IOF Event Adviser and Technical Adviser: Tauno Haapasaari

Course controller: Seppo Sipilä, Rastikarhut

Competition rules:

This event follows the rules of the Finnish Orienteering Federation, the IOF guidelines for World Ranking Events, the special rules for the Finnish Championships, and the instructions given by the organizers. The rules of the Finnish Orienteering Federation and the special rules for the Finnish Championships are available at the website <https://www.suunnistusliitto.fi/kilpailu/saannot-ja-ohjeet/lajisaannot/> (only in Finnish).

Spiked shoes are forbidden in the competition, but shoes with studs are permitted.

Competitors qualified for the A-final and chosen by organizers must carry a GPS-tracking device provided by the organizers.

Punching system:

The electronic punching system Emit will be used. Rental Emit cards are available from the event organizer, fee 5 €. If the rental Emit card is not returned after the competition there will be a charge of 80 €.

Classes:

The H21 (=M21) and D21 (=W21) classes have WRE status. To enter the WRE competition, participation in the qualification race is mandatory. Estimated winning times for women are 70–80 minutes and for men 90–100 minutes. The Finnish Long Distance Orienteering Championships take place at the same time with classes from H/D15 to H/D85. There are about 2 000 orienteers in the competition.

Entries and entry fees:

The entry fee for the WRE classes (both qualifications and A/B finals) is 39,20 €. Entry and payment no later than Thursday 3 of September 2020. No late entries allowed.



Entries and payments should be made primarily through the IRMA system of the Finnish Orienteering Federation, <https://irma.suunnistusliitto.fi>. Include your Emit card number in your entry. If your card number is missing, the organizers will reserve a rental Emit card for you at a 5 € fee. Rental Emit cards should be picked up and paid at the information desk at the competition centre.

Foreign competitors without access to IRMA enter through IOF Eventor. The new IOF World Ranking system only uses the Latin alphabet from a to z. It is very important for all runners to check that the information about them is correct. Please check the following: the spelling of your first and last name, your nationality and your year of birth. If you find any mistakes, please report them to changes_AthleteData@orienteering.org. When reporting, make sure you indicate your complete date of birth (day, month, year). It is not possible to pay through IOF Eventor.

The bank details for entry fee payment without IRMA are as follows:

Account owner: Kankaanpään Suunnistajat ry.
Bank name: Länsi-Suomen Osuuspankki
Bank address: Torikatu 11, 38700 Kankaanpää
IBAN: FI32 5106 0120 1298 30
BIC: OKOYFIHH

Payments are accepted in euros only. Please indicate the names of the competitors in the message field of the payment form.

IOF ID:

WRE athletes have to include their IOF IDs in their entry. Athletes who do not yet have an IOF ID will get one by registering a user account in IOF Eventor: <https://eventor.orienteering.org/Register>.

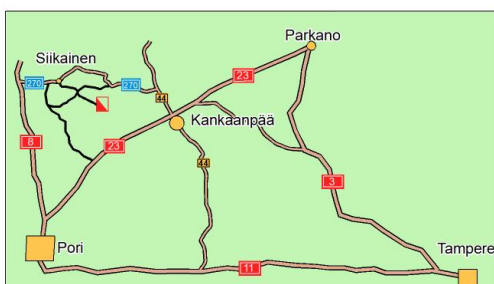
Signposting and venue:

The signposting starts from the junctions in Tuorila between roads 8 and 270 (west), as well as in Alahonkajoki between roads 44 and 270 (east). The distance from the signposts to the parking area is about 25-30 minutes from Tuorila and about 30-35 minutes from Alahonkajoki.

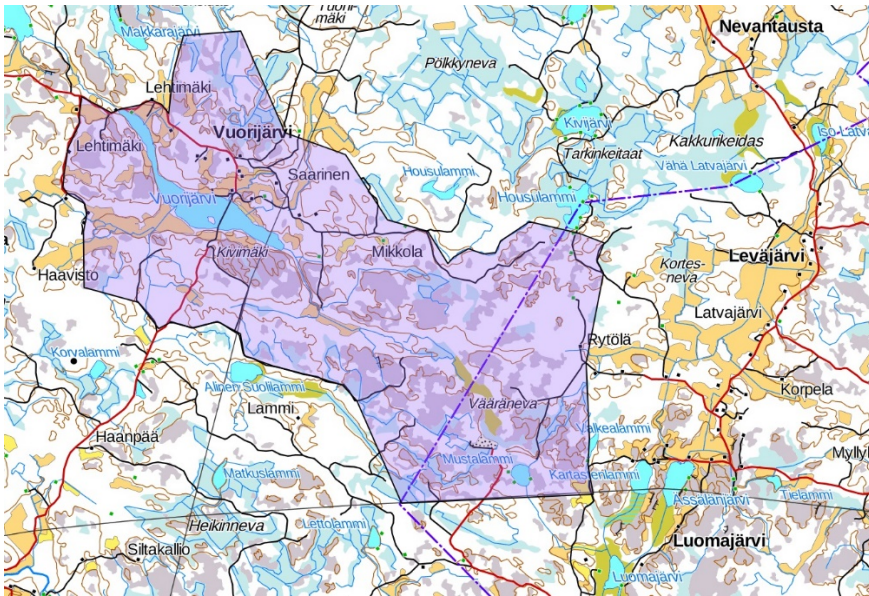
Parking near to the competition centre on a field.

The parking fee is 5 €/vehicle/day, to be paid at the information desk.

General map of the region and the embargoed area:



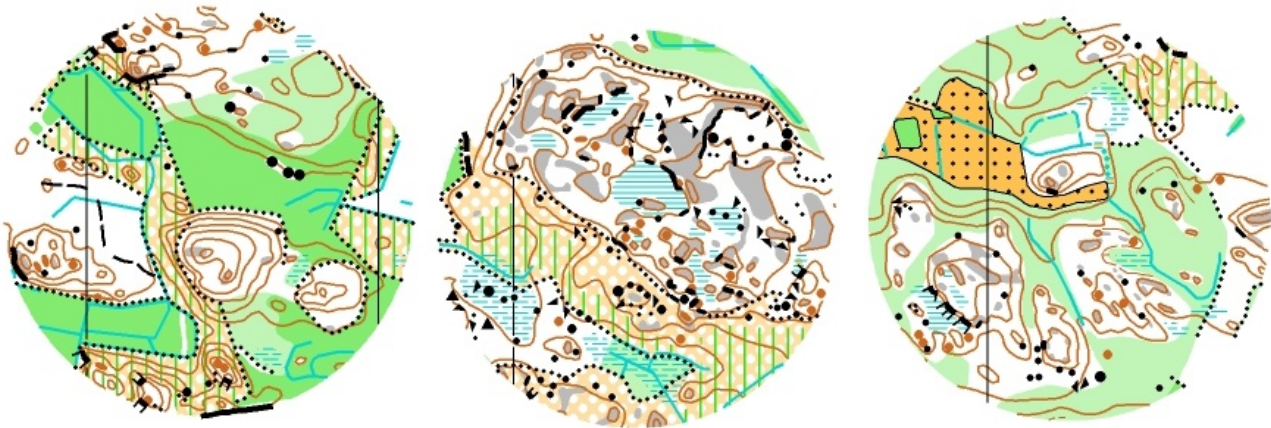
The embargoed area is indicated on the map below:



SM-PITKÄ 2020
SIIHAINEN 12.-13.9.2020

Terrain:

The competition terrain consists mostly of typical Western-Finnish forests with fast runnability. Bare cliffs and marshes are common, but there are also some areas with slower runnability. High differences and the amount of small details varies from a part to another. Max height difference is about 25 meters.



There are no earlier orienteering maps from the area used in the competition.

Competition map:

Scale: 1:15 000, contour interval: 2,5 m. Offset printed map with gray colour indicating bare cliff. Mapping made by Kimmo Viertola. The size of the map is A4 in the qualifications and A3 in the finals. The competition maps are in plastic cases.

Training possibilities:

The organizers provide training possibilities in the terrain next to the one used in the competition. There are six different tracks with varying length beginning from two different starting points. Also, a map with all controls is available. The price is 5 €/map. Contact: Reijo Mäkilä, reijo.makila@gmail.com. More information on our website www.kansu.fi/sm2020.

First starts:

The first start of the qualification race on Saturday 12 September is at 11.00 AM. The first start of the A finals on Sunday 8 September is at 10.00 AM. The B finals will start at the same time with the A finals.

**Food:**

A warm lunch will be served at low cost at the competition centre both on Saturday and Sunday.

Accommodation:

Different accommodation possibilities can be found on the website <http://www.kansu.fi/sm2020/majoitus>.

Weather:

In September the weather in Satakunta region can be anything from warm and sunny (18–23 degrees Celsius) to chilly, windy and rainy (5–10 degrees C). Competitors should be prepared for changeable weather.

Visa requirements:

According to current regulations, citizens of some countries must obtain a visa in order to enter Finland. Please check the following website for more information: www.formin.fi

Visas should be applied for at your closest Finnish embassy. Please note that conditions of entry may change. All participants are advised to keep themselves updated on the situation by consulting their local Finnish embassy.

Final event instructions, start times and other information:

There will be more information on the competition website closer to the date of the competition. Bulletin 2 will be published latest in the beginning of September 2020.

We are looking forward to meeting you in Siikainen!

Kankaanpään Suunnistajat and Siikaisten Sisu